



PFAS UPDATE

John Hausbeck

Environmental Health Services
Supervisor

Chee Thao

Environmental Health Specialist

Sept 20, 2023

Comparison of PFAS Roles



Trusted source of information
Individual risk assessment
Help county residents get well water tested
Advise well owners on options
Issue health advisories as appropriate.



WISCONSIN
DEPARTMENT OF
NATURAL RESOURCES

Research
Technical expertise
Regulatory
Investigative responsibility
Surface water and fish testing
State grant funding

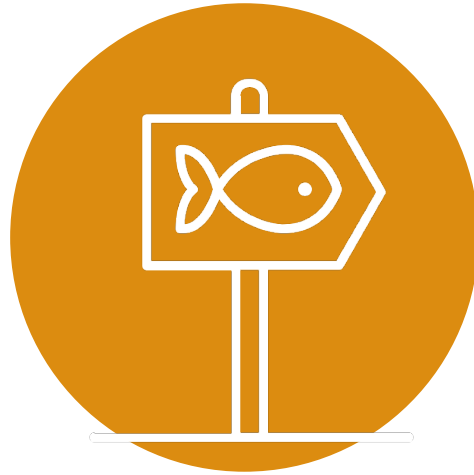
PFAS Education and Outreach



**Website
reviewed
and
updated**



**Fish
advisory
handout**



**Posting
signs along
shorelines**



**Produced
videos on
PFAS**



**Marketing
PFAS info
via ads**



m metro transit 2210

55 LIMITED STOPS

Reel in fish, not PFAS

Learn more about PFAS chemicals in fish:

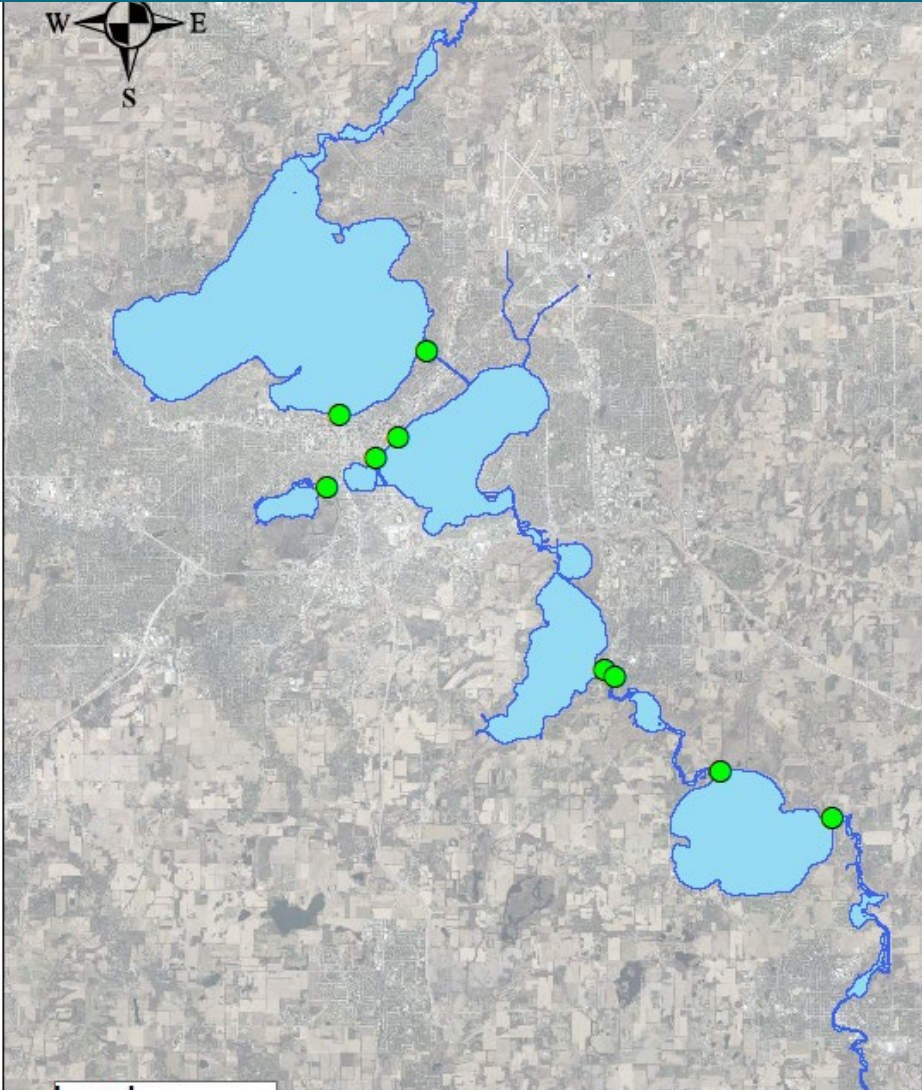
publichealthmdc.com/fish

Public Health
Responsible to Serve. Committed to
Health, Equity, Healthy Planet.



2210

PFAS Education and Outreach



Started June 2023 and
into 2024

7 locations

54 contacts

PFAS Education and Outreach

Urban Triage

Freedom, Inc.

Hmong Institute

Centro Hispano

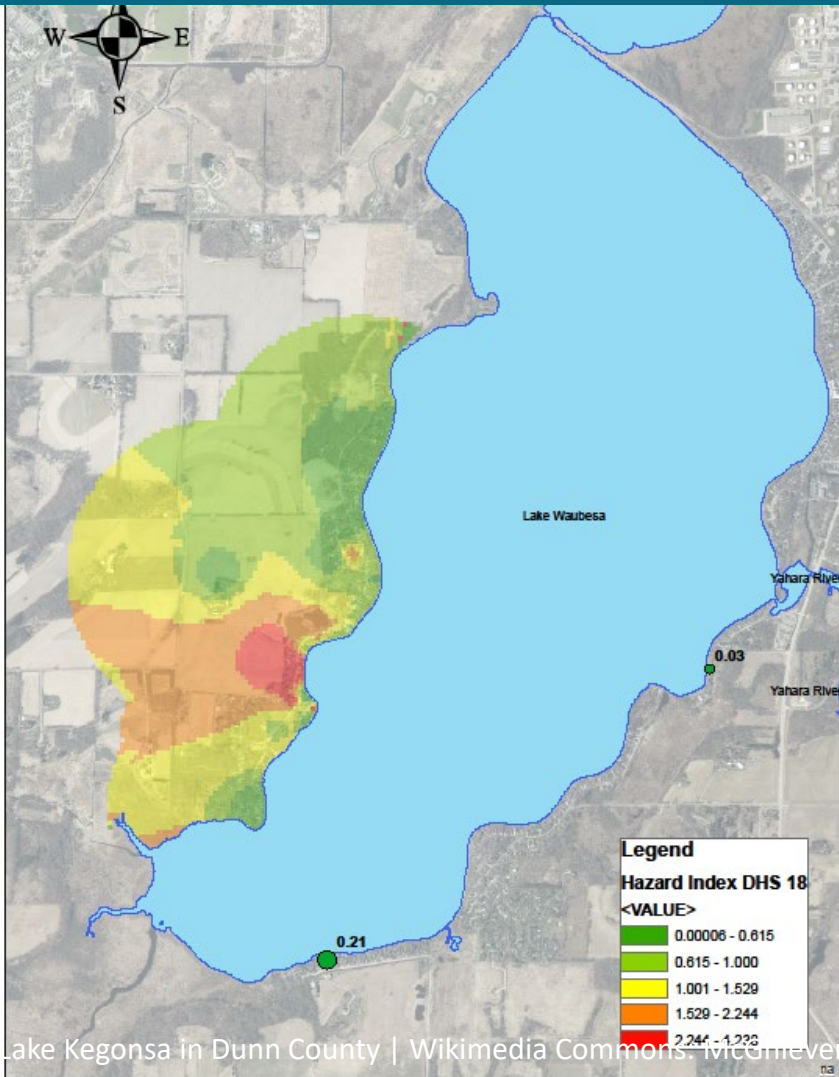
East Madison
Community Center

Kennedy Heights
Community Center

Ho-Chunk Nation

PFAS Testing in Private Wells

Town of Dunn Sampling



Initiated by private sampling

WI DHS funding paid for 10 of 24 tests in the area

We shared info and provided interpretation of results

8 (33%) of 24 tests had Hazard Index (HI) values of 1 or greater

Goodland Park well sampled, HI=0.66

PFAS Testing in Private Wells

Broader Dane County Well Sampling



Contracted with private lab

Collaborate with CDBG to identify low income households with private wells

Target to sample 240 wells in 2023 and 2024

Another ~250 owner funded tests may also be completed in that time

PFAS Sampling Process

- High risk of contamination during sampling
 - PFAS are widely used and has been in environment for decades, can collect in dust
 - Dust is a recognized pathway for PFAS exposure by National Academy of Sciences
 - “dirty” environments, i.e. typical utility room in basement: dusty, spider webs
 - Sanitize area and hands (when possible), wear gloves when sampling, bottles remain in bag and caps remain on bottles until actual sampling
- Testing is extremely sensitive
 - Testing equipment is 6-digit plus of \$\$\$
 - ppt

PFAS Sampling Process

- A Quality Control (QC) sample follows the entire process
 - QC is a bottle of purified, PFAS-free water and is included in sample kits
 - At time of sampling, the QC is poured into an empty bottle to simulate water sampling
- Pre-printed labels are used to minimize bottle exposure time to “dirty” environment
- Testing process extensive
 - Not available over the counter
- ~40 samples collected so far
 - 4 paid for

What if my water has PFAS?

Does it exceed health standards?

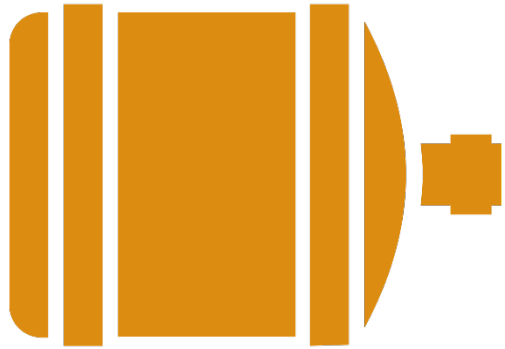
NO

Plan to test in the future.
When? TBD.

YES

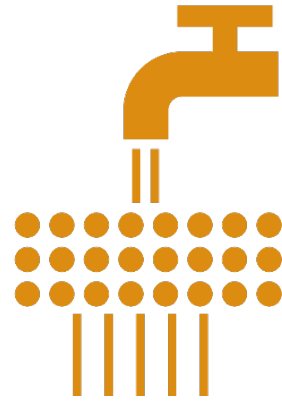
- A few options ...

My water exceeds PFAS health standards.



New Water Source

Short term: Bottled water
Long term: Public water



Treat Water

Activated carbon filter
Reverse osmosis (RO)



Replace Well

State Efforts & Funding



WISCONSIN DEPARTMENT
of HEALTH SERVICES

- **Health evaluation**
- **Recommendation on regulation**
- **Education:**
 - PFAS Overview - dhs.wi.gov/chemical/pfas.htm
 - Gardening - dhs.wi.gov/publications/p03111.pdf
 - Water filters - dhs.wi.gov/publications/p03012.pdf



WISCONSIN
DEPARTMENT OF
NATURAL RESOURCES

- **Environmental monitoring:**
dnr.wi.gov/topic/pfas/dataviewer
- **Spill investigation and clean up:**
dnr.wi.gov/topic/Brownfields/botw.html
- **Well Compensation Grant Program:**
dnr.wi.gov/aid/WellCompensation.html

Welcome! [CLICK HERE](#) to learn more about this map, interact with the layers below or zoom in to start exploring.

LAYER CONTROLS

- PFAS Cleanup Sites ...
- PFAS Sampling Info ...
- PFAS-Based Consumption Advice ...

LEGEND

Municipal Water System Sampling

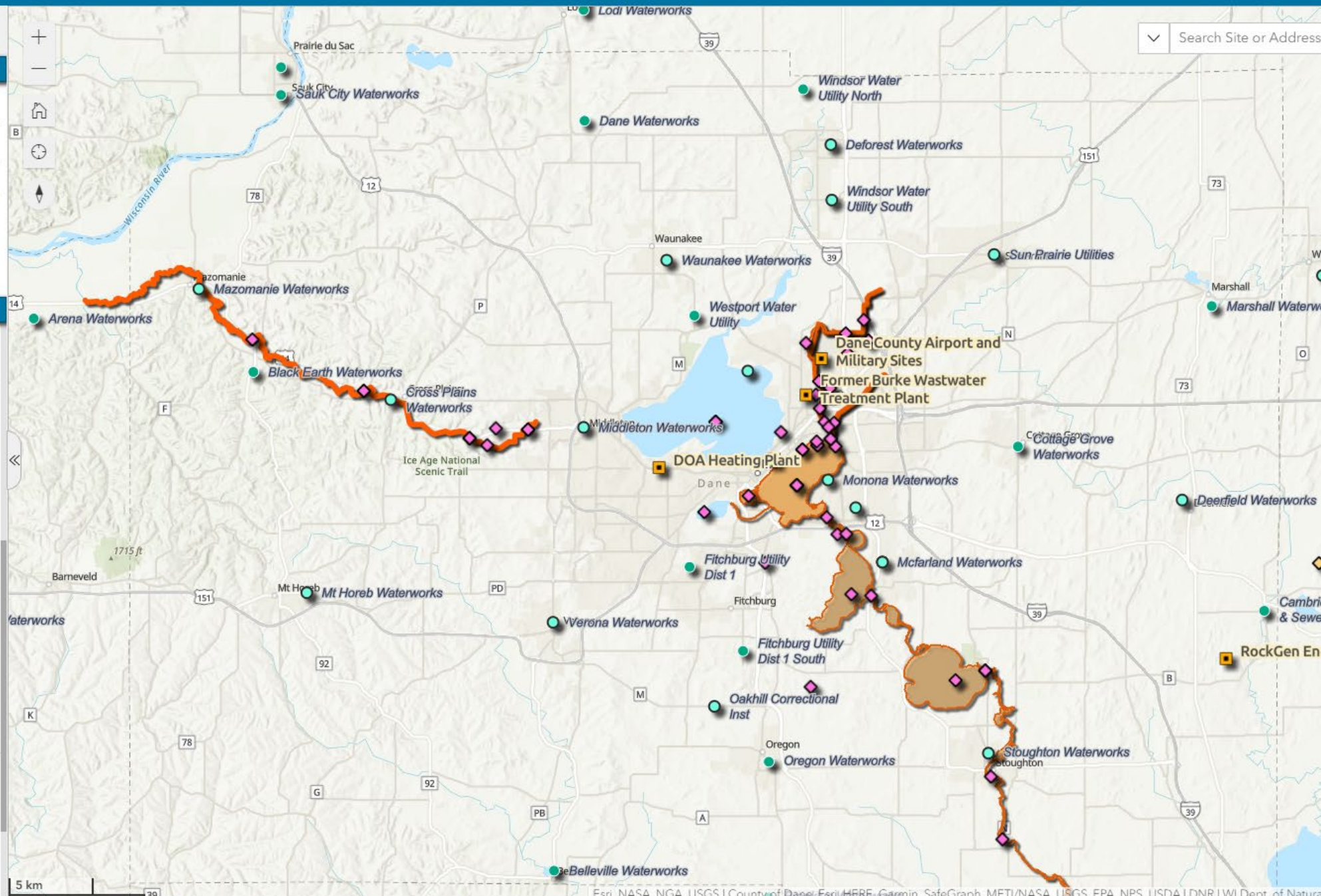
- PFAS above the WI DHS health advisory level in one or more samples from the system
- PFAS exceeds the WI DHS hazard index for samples from the water system
- PFAS detected below hazard index in one or more samples from the water system
- PFAS not detected in any samples from the water system

Surface Water and Fish Tissue Sampling

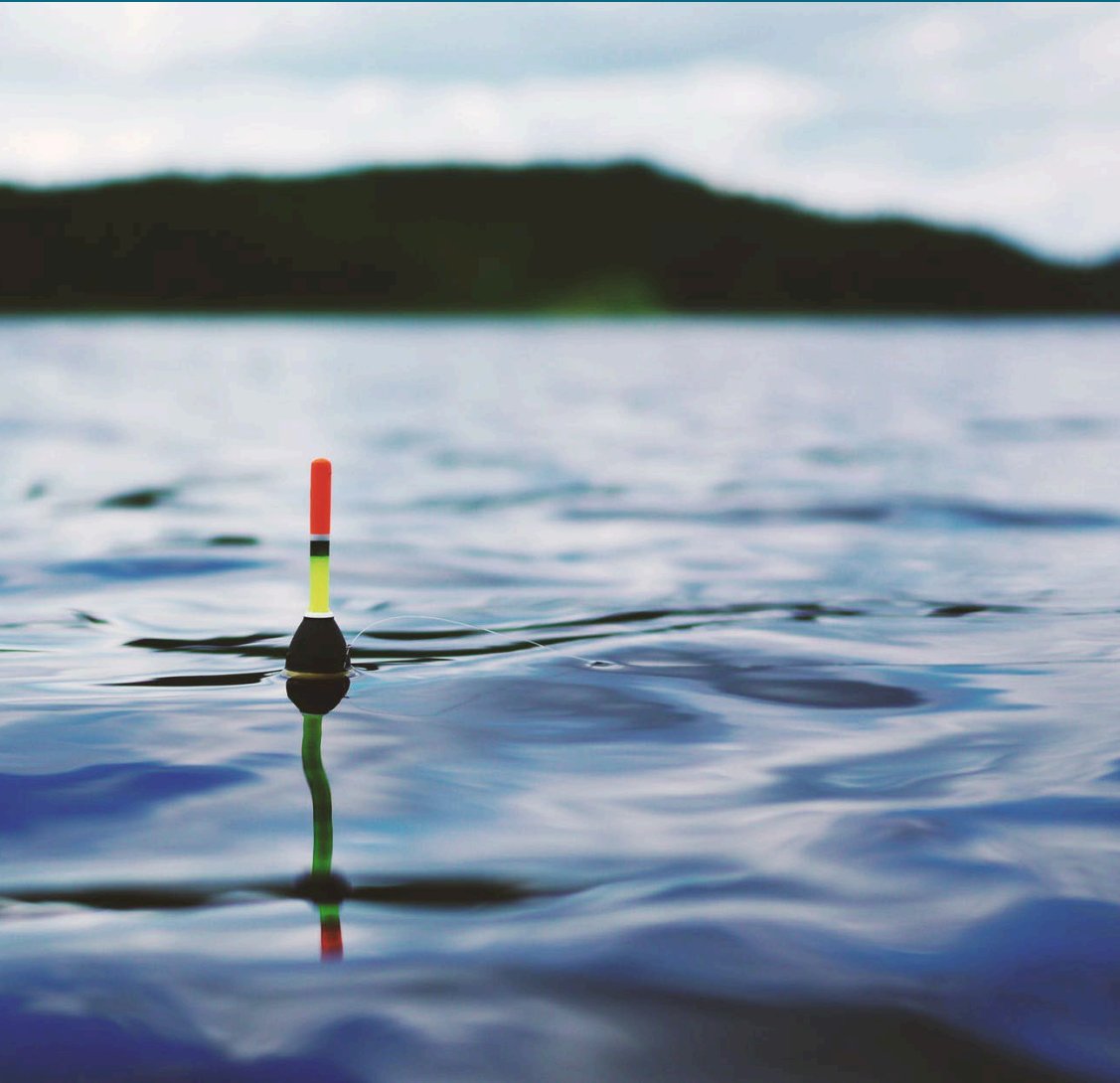
- Background Monitoring - Lakes
- Background Monitoring - Major Rivers
- Targeted Monitoring

PFAS-Based Consumption Advice

Fish Advisory - River/Waterbody Area



Fish Advisories



Fish consumption advisories on specific Dane Co waters

All about choosing wisely

<https://dnr.wisconsin.gov/topic/Fishing/consumption>

Combined effort of State Health and DNR

Metrogro



Fertilizer product made from biosolids collected by MMSD

madsewerpfasinitiative.org/what-were-doing/

No industrial sources of PFAS in MMSD service area

Metrogro



MMSD is monitoring for PFAS in

Wastewater received

Treated water

Biosolids

Focusing on source reduction to
reduce levels further

Other Questions

Town sponsored sampling?

Strategy depends on desired outcome

- Find hotspots? Target area of concern, such as landfills, airports, etc.
- Make testing more available? Provide financial assistance for testing

Other Questions

Are off-the-shelf tests available?

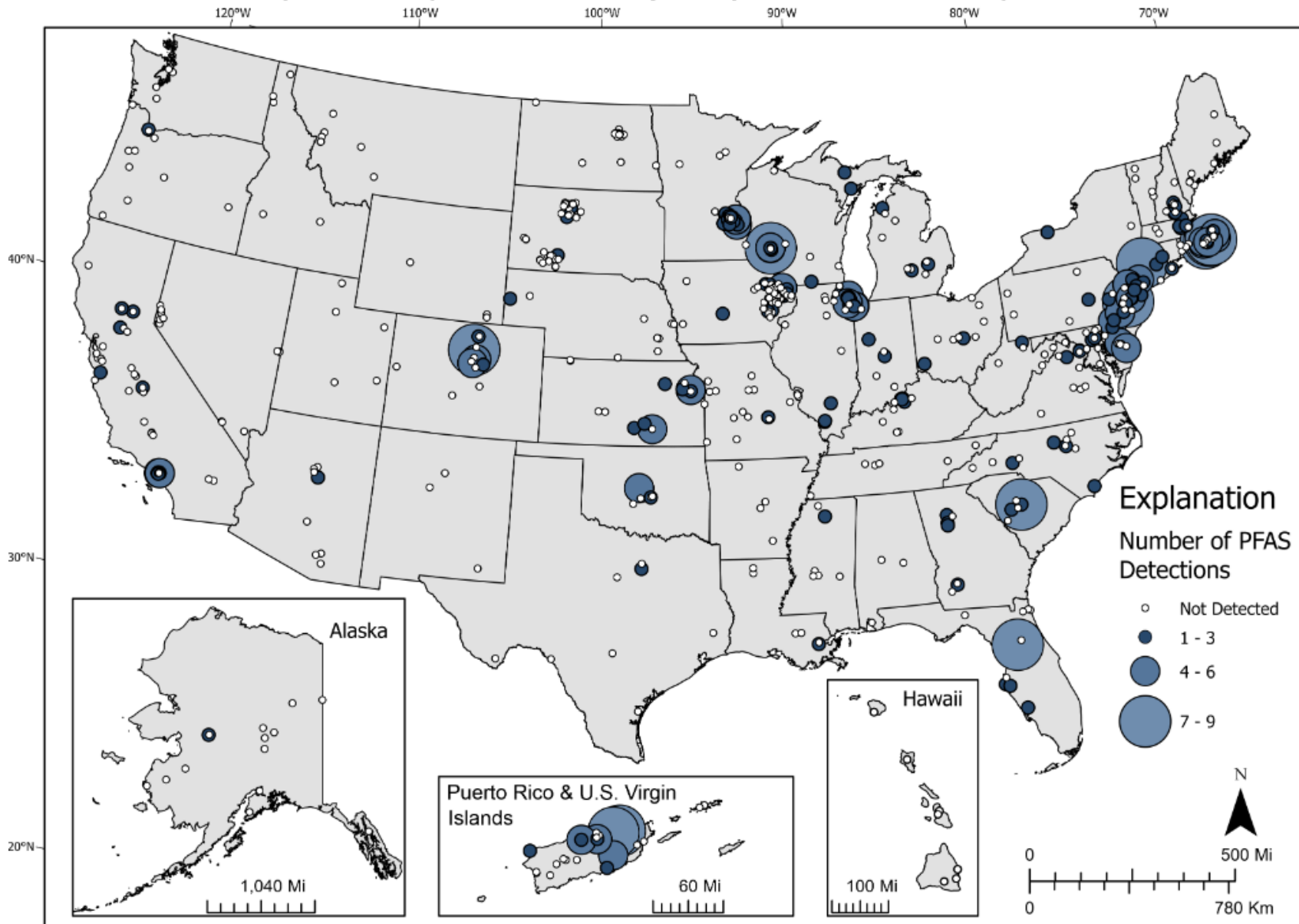
No.

Other Questions

National studies on the prevalence of PFAS?

- USGS recently released an analysis (next slide)
- Lots of other work happening.

Per- and Polyfluoroalkyl Substances (PFAS) in Select U.S. Tapwater Locations





John Hausbeck

**Environmental Health Services
Supervisor**

jhausbeck@publichealthmdc.com

Chee Thao

Environmental Health Specialist

cthao@publichealthmdc.com